

SOFTCAM.KEY Upload Instruction.

1. Connect Serial Cable Computer and STB.
2. Run UpDown Tool V1.22 or newer

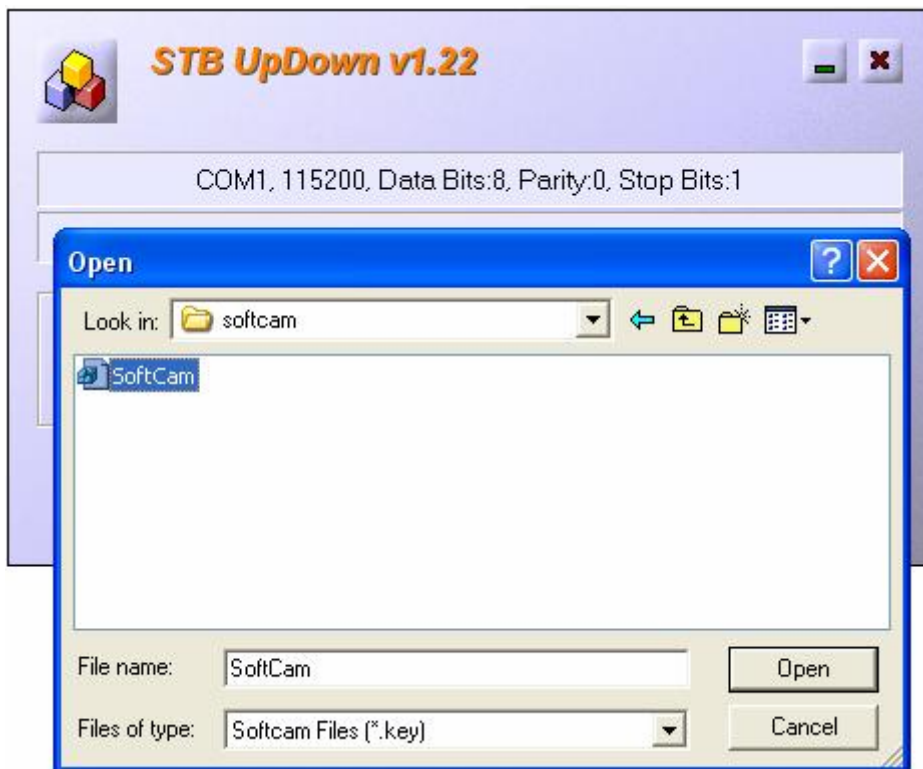
3. Press Connect Icon



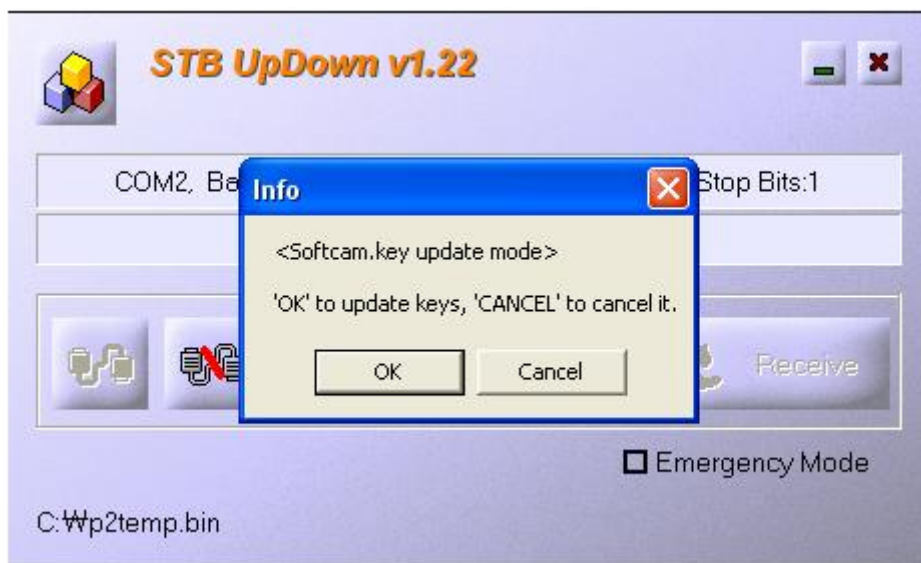
4. Press Send Button



5. Choose file to download. & press Open button. See<Image 1>
6. Press Ok button if correct file selected.
7. End



< Image 1>



<Image 2>